

# MULTI-SPECIALTY *Ultrasound Table*

- 550 lb (250kg) bariatric rated lift & load capacity
- Twin tower design for added strength & rigidity
- Dynamic 22" to 38" (56-97cm) adjustable height range for wheelchair transfer & ergonomic working heights



shown in Sapphire fabric



Easily converts to fully upright chair position in seconds!

*Inspired by the leading ergonomic experts in sonography*



**SOUND | ERGONOMICS**

- Decrease sonographer injury
- Features minimize exam times



FM584901

made in the USA  
with US & imported parts



**OAKWORKS®**  
**MEDICAL**  
*Position for Success*

# MULTI-SPECIALTY *Ultrasound Table*

## Recommended for:

- All abdominal & superficial structures exams (*thyroid, male pelvis*)
- Musculoskeletal exams
- OB/GYN exams
- Breast exams
- Vascular exams
- Biopsies



4 Position Leg Section



shown in Sapphire fabric  
with optional Side Rails

## MULTI-SPECIALTY TABLE

#67375-T\* 27" W

#61803-T\* 30" W

FEATURES	
3 Section Top	27" (69cm) or 30" (76cm) wide x 72" (183cm) long
Backrest	34" (86cm) long
Seat	24" (61cm) long
Leg Rest	13" (33cm) long
Motion 1	Electric Height Range 22" - 38" (56-97cm)
Motion 2	Electric Trendelenburg/Reverse Tilt $\pm 15^\circ$
Motion 3	Electric Fowler Backrest 0-75°
Motion 4	Manual 4 position Leg Rest 0-90°
Controls	Multi-function hand & foot control
Weight Capacity	550 lb (250kg)
Product Weight	359 lb (163kg)
Padding	3" (8cm) Comfort Foam™
Fabric	Premium, PVC free TerraTouch™
Included Features	4" (10cm) locking casters, Adjustable access back support (left & right) 0-85°, Central base locking system, Paper roll holder, Stirrups (Retractable foot rests)
Warranty	3 years parts, 2 years labor
Safety Listings	FDA listed, CE marked, cETLus listed, CB Certificate

OPTIONS <i>must be ordered with table.</i>		#
Accessory Mounting Plate	Fowler end	62123
Foot Control	Height, Tilt, Fowler, Cardio Panel	65679
Non-USA electric system	please contact us for order details	73134
Procedure Tray 30" (76 cm) Width Only	12.25" (6cm) x 10.25" (26cm) and holds 2 quarts (1.9 liters)	73127
Side Rails (set of 2)	23.5" (60cm) long x 6" (15cm) tall (from surface of table)	61781
Sliding Cardio Panel - Electric	30" (76cm) width table, left side	73131
Sliding Cardio Panel - Manual	30" (76cm) width table, left side	73130
ACCESSORIES <i>order any time.</i>		#
Detachable Arm Board	Use with T-rail adapter 5" (13cm) wide x 20.5" (52cm) long	62192
QuickLock™ Head Rest (black) & AeroCel Pad	Comfortable, adjustable prone or supine support (requires mounting plate)	PKG6914-T*
Table Extender	24" (61cm) wide x 12" (30cm) long (requires mounting plate)	63487
T-rail Adapter 8" (20cm) long	Attaches to the backrest for use with USA format T-rail attachable accessories.	61902

\*Fabric code (T) must be specified when ordering.

# ULTRASOUND FEATURES & OPTIONS

## CENTRAL BASE LOCKING SYSTEM

Easily lock your table into place with our unique system that allows locking from both sides of the table. #61777



STANDARD

## STIRRUPS #71001

Adjust to a wide range of angles & lengths to accommodate any patient or procedure. Retractable design stores inside the table.



STANDARD

## ADJUSTABLE ACCESS BACK SUPPORT

Left: #73133 Right: #73132

Adjustable with 5 positions 0-85°, allowing easy access for sonographer to the far side and back support for patients. 10" (25cm) wide x 15.5" (39cm) long



STANDARD

## SIDE RAILS #61781

Increase stability and security for your patient. Fold down out of the way when not in use. 23.5" (60cm) long x 6" (15cm) tall (from surface of table)



OPTIONAL

## SLIDING CARDIO PANEL *patent pending*

Electric: #73131 Manual: #73130

The sliding cardio panel allows you to adjust the opening to the size you need, up to 15" (38cm). 10" (25cm) wide x 28" (71cm) long. Great for left or right handed scanning. Can also be used as an armrest. Available in manual or electric adjustment options. Available on left side of 30" (76cm) width tables.



OPTIONAL

## PROCEDURE TRAY #73127

Retractable, removable stainless steel. 12.25" (6cm) x 10.25" (26cm) and holds 2 quarts (1.9 liters). Available on 30" (76cm) wide tables.



OPTIONAL

## ACCESSORY MOUNTING PLATE

#62123

Add a face rest or table extender to your table.



OPTIONAL

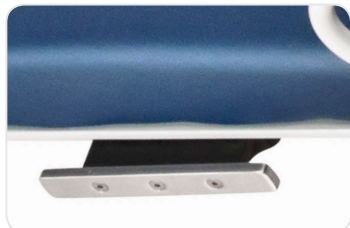
# ULTRASOUND ACCESSORIES

**DETACHABLE ARM BOARD #62192-T\***  
Attaches to the T-rail Adaptor and rotates over 140 degrees. 5" (13cm) wide x 20.5" (52cm) long (Requires T-Rail Adaptor)



## T-RAIL ADAPTOR #61902

Multiple locations allow you to choose the best spot for this easily installed & removed accessory capable of handling up to 150 lb (68kg). Can be used with any American standard accessory. 8" (20cm) long



## TABLE EXTENDER #63487-T\*

Lengthens the table by 12" (31cm) to 84" (213cm) allowing for access to the patient's neck for carotid artery exams and thyroid exams. 24" (61cm) W x 12" (31cm) L



## QUICKLOCK™ HEAD REST & AERO·CEL PAD #PKG4186-T\*

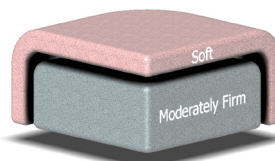
The platform allows precise cervical flexion and height positioning over a wide range for both prone and supine treatments. (Requires Accessory Mounting Plate)



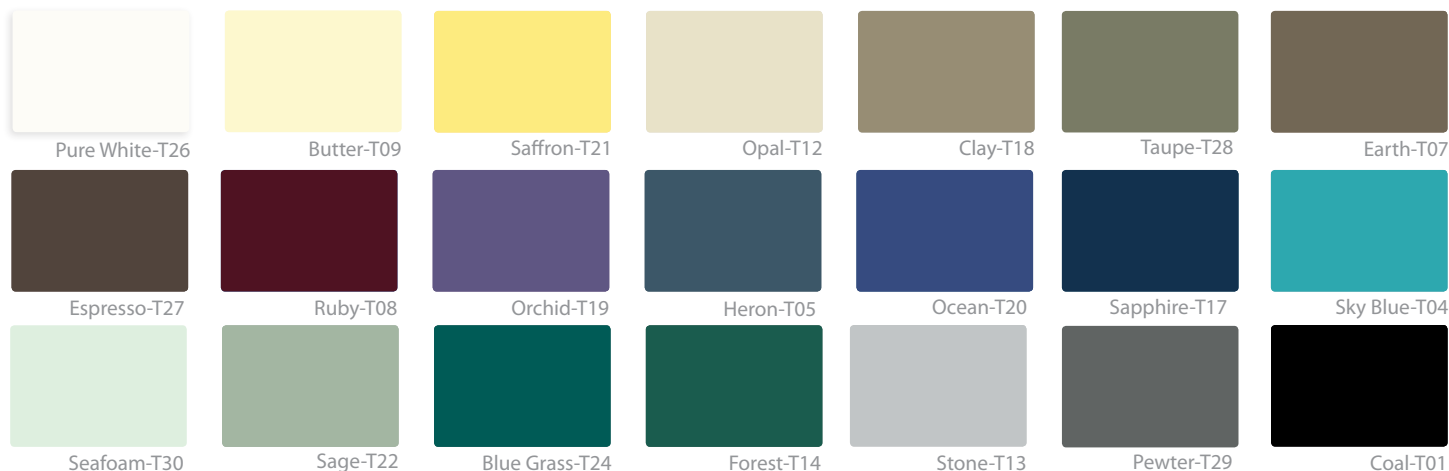
## TERRATOUGH™ FABRIC

Meets the requirements of ISO 10993-1:2009 Biological Evaluation of Medical Tables & passes testing for Cytotoxicity, Skin Irritation & Sensitization as well as CA TB117 Fire Retardance testing. Please refer to the product cleaning instructions for a list of approved cleaners and disinfectants.

## PADDING



**3" Comfort Foam™**  
More comfort and support



*We strive to ensure that the colors displayed on our product imagery (online and in print) are as accurate as possible. However, due to the limitations of printers, scanners, computer monitors, and other equipment, the colors may not be accurate.*

**CONTACT:**

*View our full line of Medical products*



Scan this code with your smart phone

#72703



717.235.6807 [www.oakworksmed.com](http://www.oakworksmed.com) email: [customerservice@oakworks.com](mailto:customerservice@oakworks.com)